

ENERGY MANAGEMENT SYSTEM

# Senergy EMS

Higec  More



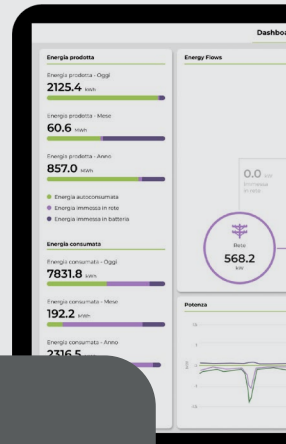
Monitoring Renewables



# Advanced energy flow management

Senergy EMS (Energy Management System) is an advanced solution designed to fully and efficiently manage energy flows in systems equipped with Battery Energy Storage Systems (BESS), optimizing energy storage and release based on demand and operating conditions.

The product comes in the form of a compact electrical panel, designed to be installed directly at the delivery point of the electricity grid. Equipped with a network analyzer, the system is able to interface with the main brands of inverters, batteries and sensors needed to monitor and optimize energy consumption.



## Versatile and scalable solution

Senergy EMS is available in two versions developed to meet market needs:



### Senergy Utility Scale

for power plants >1MW

EMS solution integrated into the Higecco More PPC/CCI which guarantees total control of the system with advanced control policies



### Senergy C&I

for power plants <1MW

Compact EMS solution ideal for optimizing energy efficiency and ensuring a rapid Return On Investment (ROI)



## Easy installation and configuration

Turnkey service available



## Flexibility and compatibility

Compatible with major brands of inverters, batteries and sensors



## Intuitive user interface

Modern and user-friendly dashboard



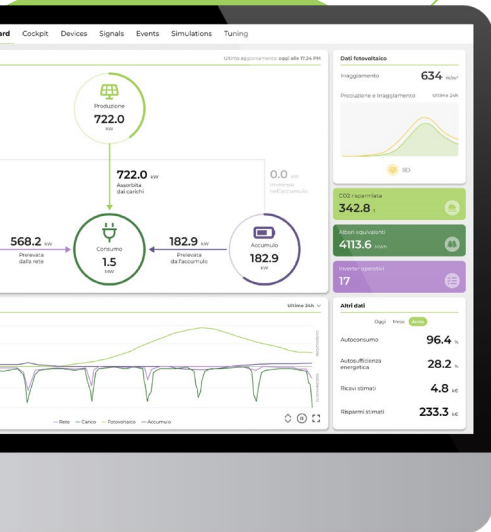
## Advanced Control Strategies

Zero feed-in, peak shaving, load leveling and more



## Maximum flexibility

Solution designed to adapt to the specific needs of the customer





**Higeco More Srl**

info@higecomore.com



(+39) 02 4070 2383



Via Toscana, 13B, 20136 Milano (MI), Italy  
Via Cal Longa, 48, 32030 San Gregorio  
nelle Alpi (BL), Italy

[www.higecomore.com](http://www.higecomore.com)

